

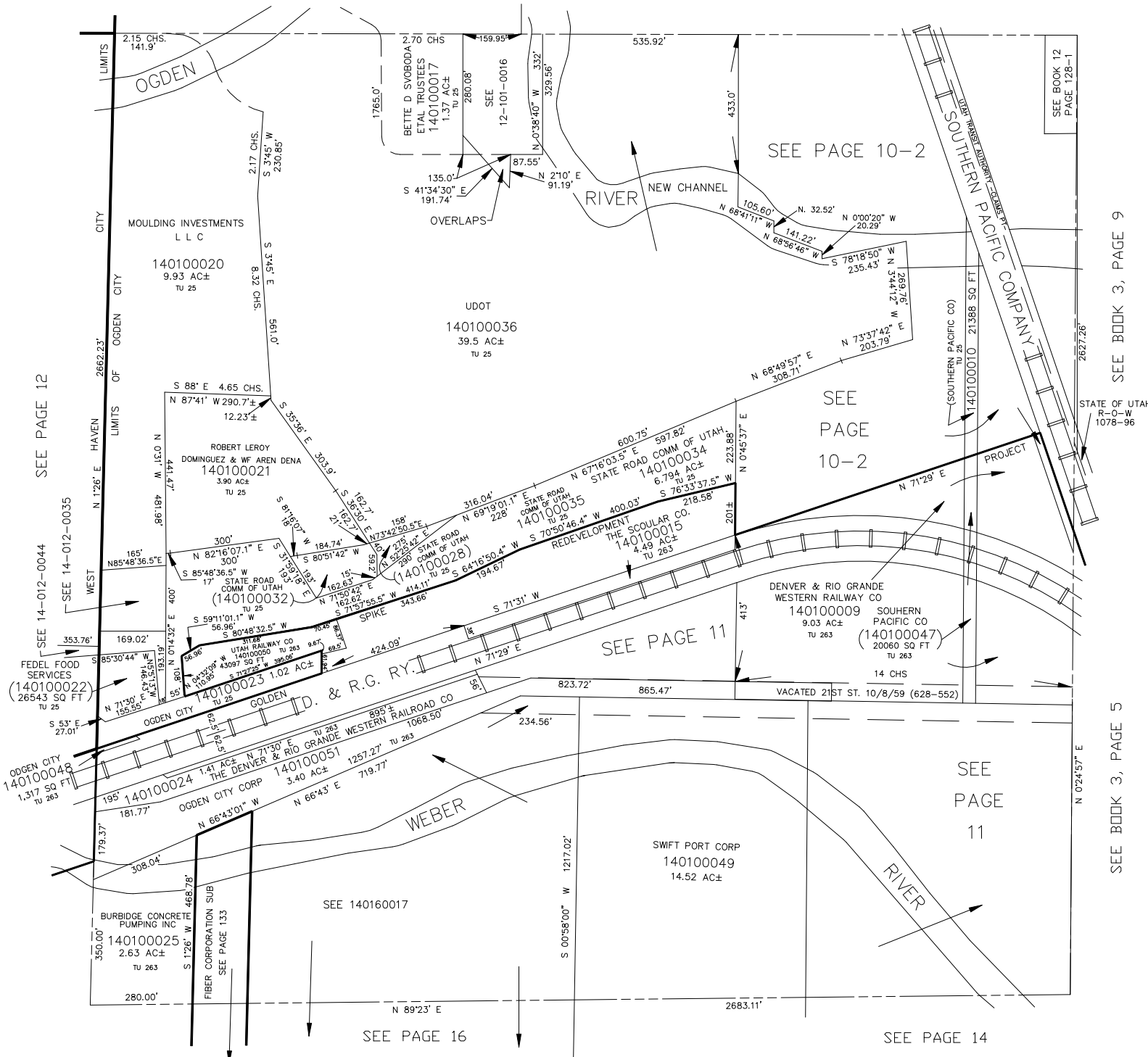
N.E. 1/4
SECTION 30, T.6N., R.1W., S.L.B. & M.

IN OGDEN CITY

SCALE 1" = 200'

TAXING UNIT: 25, 263

SEE BOOK 12, PAGE 101



SEE PAGE 12

SEE PAGE 11

SEE PAGE 14

SEE PAGE 16

SEE PAGE 10-2

SEE PAGE 10-2

SEE PAGE 11

SEE PAGE 14

SEE BOOK 12
PAGE 128-1

SEE BOOK 3, PAGE 9

SEE BOOK 3, PAGE 5

STATE OF UTAH
R-O-W
1078-96